

Technical Data Sheet

Dokumental® RFA 9xx Water Colour Inks

Water based inks for artistic fading and blending effects

General Information

With our odourless RFA 9 water colour inks artists are enabled to create pictures and paintings in brilliant colors. A large variety of colors can be tailored upon customer request. For water color fading and blending effects we recommend special water color paper (e.g. CANSON XL Aquarelle C400039170, SOLO VARIA Aquarell & Zeichenblock 300g/m², Createk Premium Aquarellpapier 300g/m², Faber Castell Sketch Pad 160g/m², Zenacolor Watercolorblock 300g/m²).

On these special papers the inks show no ghosting. Even after drying the inks can be reactivated simply with water. The inks can be blended and mixed in any ratio to create new colors and color gradients.

Suitable Surfaces

Special Water Color Paper (see above)

Applicable Standards & Regulations on request

Physical Data of Sample Colours (A large variety of additional colours can be tailored upon request)

Type	Colour	Surface tension mN/m	pH-Value	Density at 20°C g/cm ³ ± 0.02
Dokumental® RFA 9/20	Cadmium Yellow	> 45	7,0 – 8,0	1,02
Dokumental® RFA 9/79	Bright Red	> 45	7,0 – 8,0	1,02
Dokumental® RFA 9/50	Magenta	> 45	7,0 – 8,0	1,02
Dokumental® RFA 9/83	Cobalt Blue	> 45	7,0 – 8,0	1,02
Dokumental® RFA 9/34	Green	> 45	7,0 – 8,0	1,02
Dokumental® RFA 9/35	Deep Burnt Sienna	> 45	7,0 – 8,0	1,02
Dokumental® RFA 9/155	Black	> 45	9,0 – 10,0	1,03
Dokumental® RFA 9/28	Clear	> 45	7,0 – 8,0	1,00

Technical advice:

Suitable components:

Nibs: Polyester, Acrylic

Nylon nibs need to be selected carefully! We recommend to use specially adjusted nibs, e.g. Aubex HFX 456E. These nibs avoid color change of the inks. With many other Nylon nibs color change may occur.

Reservoirs: polyester (the compatibility with acetate reservoirs must be tested in advance).

Barrels, caps, plugs: Polypropylene, butadiene-styrene, polyethylene

It is mandatory to approve the compatibility of the ink and the components as well as the performance of the writing system in advance. Cap and plug must close tightly.

Before use of our product the filling station has to be maintained and cleaned carefully. The inks are sensitive to any kind of contamination. Cross-contamination of the inks may lead to a colour mismatch or will even lead to a defective marker or shorter shelf life.

The inks are acid free. pH of fresh inks is 7 to 8.0 (black 9.0 to 10.0). On aging the pH may drop in extreme cases down to 4.0. To retain the color, store artworks in folders/portfolios to protect from direct light. The inks are not water resistant.

Cap-off time strongly depends on the used nibs, reservoirs and filling quantity. In most systems the cap-off time should be in the range of 1 to maximum 3 days. Thorough testing of the selected components is mandatory.

Storage, Handling & Transportation

Store our product frost protected and avoid direct sunlight. Recommended storage temperature for the product is between 10°C and 30°C. Storage temperatures above 30°C for several days bear the risk of a reduced shelf life of the ink. The shelf life of the inks in original sealed containers is two years. Make sure that the drums are closed tightly after they were opened.

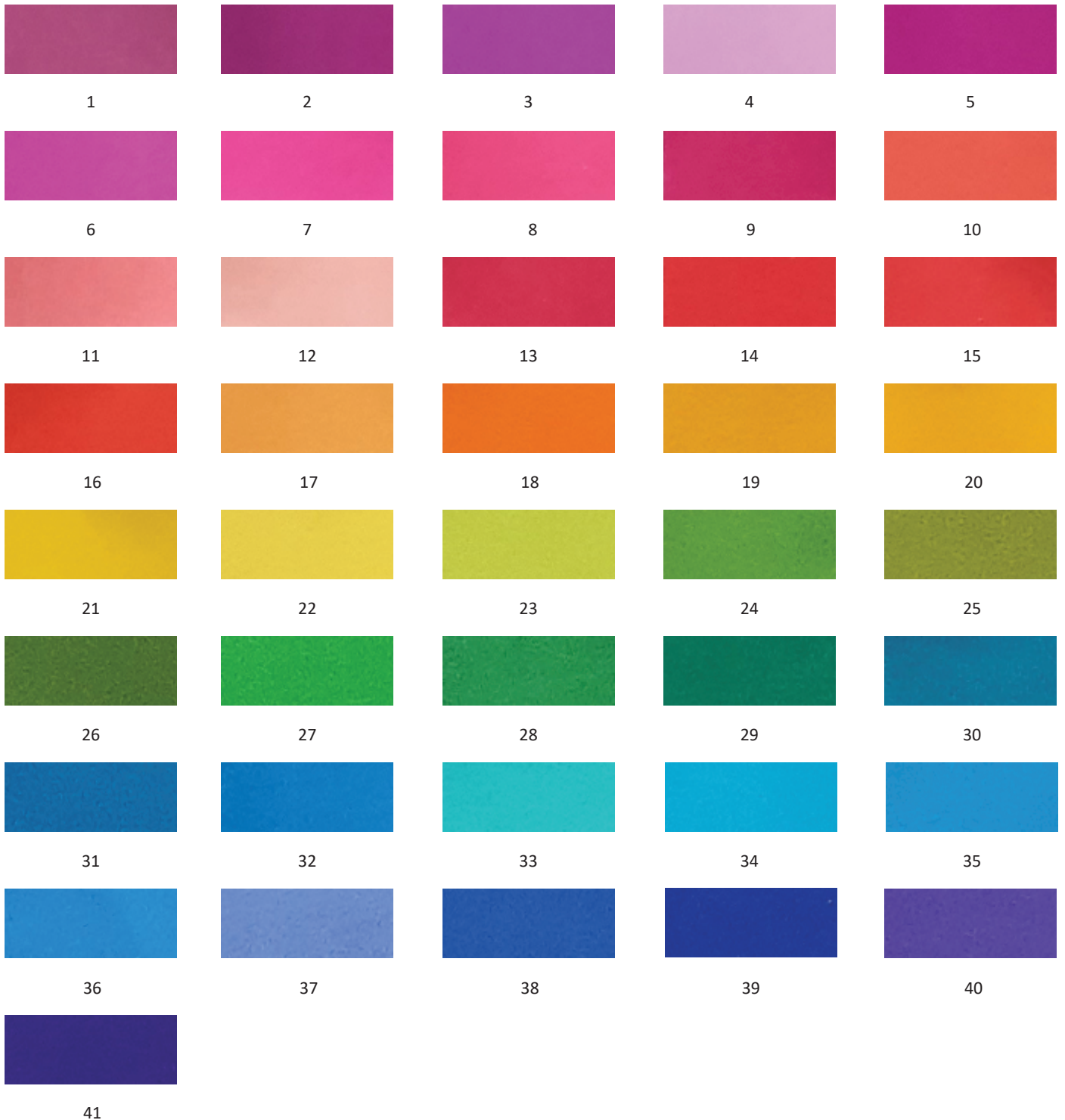
Packaging

20 kg plastic drum
 200 kg plastic drum
 1,000 kg IBC

Produced by

DOKUMENTAL GmbH & Co KG
 Wöllnerstraße 26
 D-67065 Ludwigshafen
 Phone: +49(0)621/37702-200
 Fax: +49(0)621/37702-391
 Mail: info@dokumental.de
 www.dokumental.de

Overview of Colour Examples



Overview of Colour Examples

